



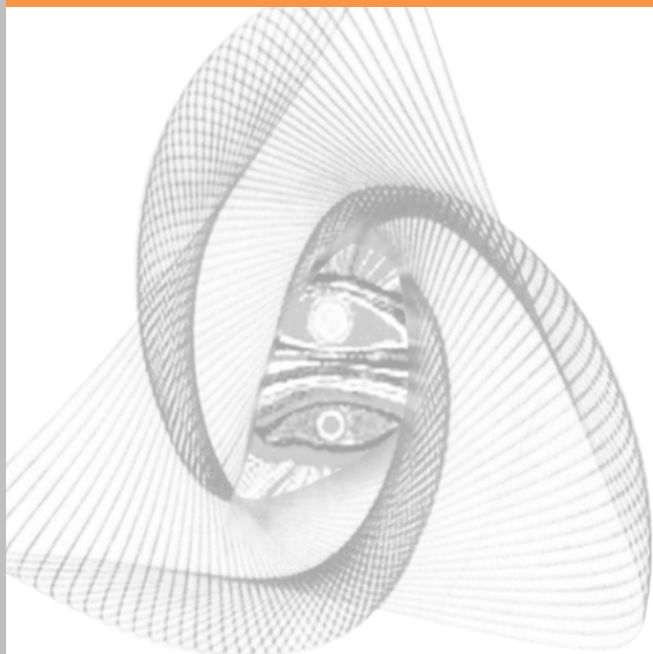
Institute of Contemporary Observation

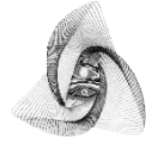
CSR: A New Approach for Promoting Human Rights and Labor Rights In China

Presented by Liu Kai Ming

Ph. D, Executive Director
Institute of Contemporary Observation
Migrant Workers Community College
Email: liukaiming@yahoo.com.cn
Website: www.ico-china.org

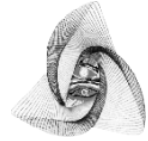
Singapore
July 15, 2004





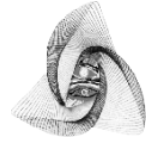
I. The Key Labor Issues in South China

1. Migrant Workers
2. Excessive Overtime
3. Low Wages
4. Lack of Social Security
5. Unstable Employment
6. Occupational Health and Safety Problems



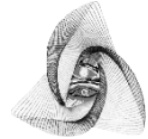
CSR: An Important Approach to promote Human Rights and Empower Workers In China

- CSR implementation emerged in China since 1990's.
- There are more and more buyers to audit and monitor their suppliers' labor practices .
- There are over 100,000 factories had been audited or monitored in 2003.
- Have great impact for the China supply chain of the multinational companies.



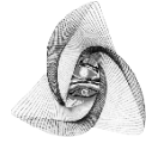
Beyond the audit and monitoring

- Working hand in hand with factories and its workers.
- Cultivating the incentive power inside factories
- Management and workers participate the process of CSR implementation
- Providing more and more opportunities for Chinese local institutions and NGOs input into CSR mainstream.



ICO/MWCC Initiatives

- ICO is a pioneer in Labor and CSR field in China.
- Migrant Workers Community College
- International Labor Standards Training for SMEs management
- Migrant Workers Legal Aid Network
- China Labor Research and Support Network



Cooperate to fight a good future for China

- Working hand in hand with different parties to empower worker
- Supporting enterprises and communities sustainable development
- Cooperating with global and local entities

